

Cumulus Control Center Dashboard Guide

Document Version: 1.0
Release Date: May 2026



Disclaimer:

This software, hardware and related documentation are provided under a license agreement containing restrictions on use and disclosure and are protected by intellectual property laws. Except as expressly permitted in your license agreement or allowed by law, you may not use, copy, reproduce, translate, broadcast, modify, license, transmit, distribute, exhibit, perform, publish, or display any part, in any form, or by any means. Reverse engineering, disassembly, or decompilation of this software, unless required by law for interoperability, is prohibited.

The information contained herein is subject to change without notice and is not warranted to be error-free. If you find any errors, please report them to Cumulus Digital Systems, Inc. in writing to support@cumulusquality.com.

Smart Torque System© is a registered trademark of Cumulus Digital Systems, Inc.

This software or hardware and documentation may provide access to or information on content, products, and services from third parties. Cumulus Digital Systems, Inc. and its affiliates are not responsible for and expressly disclaim all warranties of any kind with respect to third-party content, products, and services. Cumulus Digital Systems, Inc. and its affiliates will not be responsible for any loss, costs, or damages incurred due to your access to or use of third-party content, products, or services.



Contents

Introduction	4
Purpose	4
Key Terms	4
Prerequisites	5
Accessing the Dashboard	5
Filter Criteria	6
Date	6
Contractor	6
Subsystem	7
System	7
Asset type	7
Permanence	7
Activity	7
Summary Status Dials	8
Failures	8
Construction Progress	8
Issues	10
Work Completions by Day	12
System and Subsystem Distribution	13
Configuring your dashboard	13
SUPPORT	14



Introduction

The **Dashboard** is the landing page of Cumulus Control Center. It provides a real-time visual summary of your site's connection and asset progress — giving supervisors, project managers, and Super Users an at-a-glance view of site status without navigating into individual records.

The Dashboard aggregates data across your entire site and presents it as a set of interactive charts and status indicators. You can filter the view by date, contractor, system, asset type, permanence, subsystem, and activity to focus on the area of work most relevant to your role.

This guide covers the Dashboard in Cumulus Control Center. For information on other tabs, refer to the relevant section of the Cumulus Control Center Guide.

Purpose

The Dashboard allows you to:

- Monitor the overall progress of assets across your site in real time.
- Identify exceptions and outstanding items that require attention.
- Filter your view by date, contractor, system, asset type, permanence, subsystem, and activity to focus on specific work areas.
- Track progress trends over time using the Progress charts.
- Review system and subsystem-level status distribution across all joint types.
- Download and print charts for reporting purposes.

The Dashboard is the recommended first stop at the start of each shift or management review.

Key Terms

Term	Definition
Activity	A configured set of work (such as a turnaround or commissioning project) that assets are assigned to in Control Center.
Subsystem	A grouping of connections under a defined system within the site hierarchy (System → Subsystem).
Status	The current state of a connection as recorded in Cumulus — for example, Ready for Tightening, Completed, or Rejected.



Term	Definition
Issues	Connections or items flagged as requiring attention, displayed below the Summary Status Dials (these are traditionally known as tickets)
Filter Criteria	The set of controls at the top of the Dashboard (EX: date range, contractor, subsystem, activity) used to scope the data shown in all charts and boxes.

Prerequisites

Before using the Dashboard, ensure the following are in place:

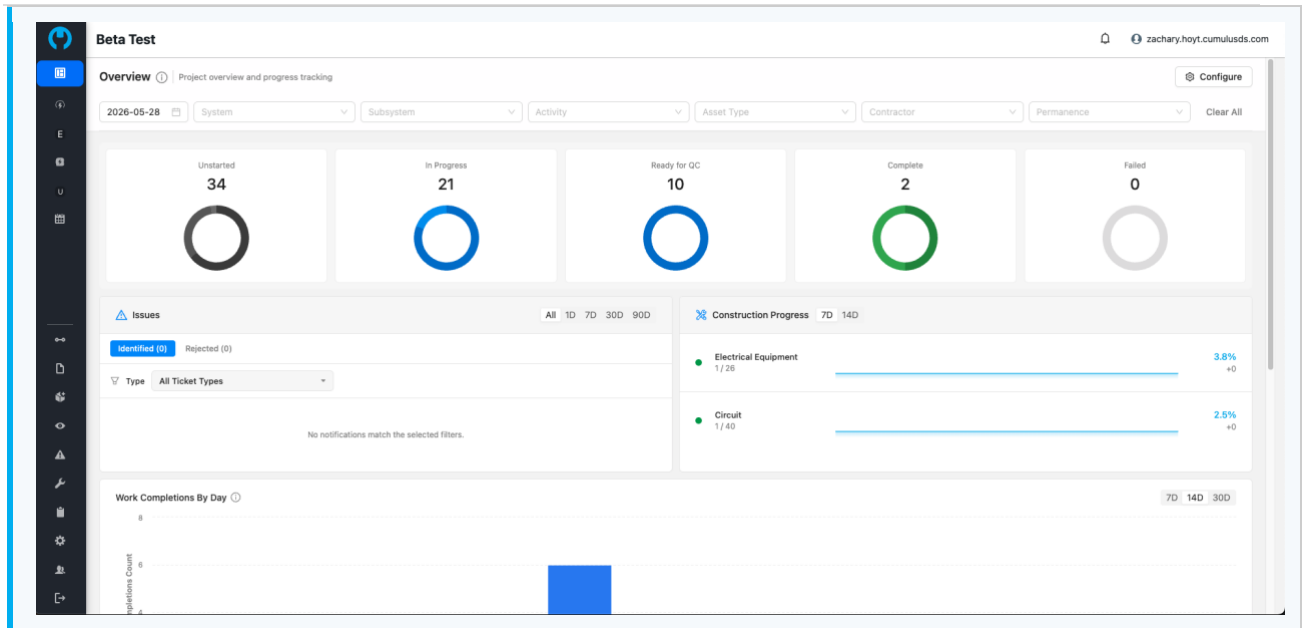
- You have a valid Cumulus Control Center login with at least read access to the Dashboard.
 - Users need the following permissions set : **Site Productivity, Dashboard Configuration Managers, Generic Dashboard Viewer,**
- At least one Asset type has been created, and Asset Records have been created in it.
** note the latest version of the Control Center dashboard does not report legacy connections*

The Dashboard data reflects what has been synced from the Cumulus Mobile App. Ensure field users have synced their devices for the most current view.

Accessing the Dashboard

The Dashboard is the default landing page when you log in to Control Center. If you have navigated away, you can return to it at any time.

- Select **Dashboard** from the navigation bar on the left side of the screen.
- The Dashboard loads with the default filter criteria applied (current date range, all contractors, all subsystems, all activities).



Filter Criteria

The filter bar at the top of the Dashboard controls the scope of all data shown on the page. Adjusting any filter updates every chart and status box simultaneously.

Date

Use the **Date** picker to specify the date range for the data shown.

- Select the **Date** field and choose a date from the calendar.
- The Dashboard refreshes automatically to show only connections with activity recorded within the selected range.

Contractor

Use the **Contracting Company** filter to scope the Dashboard to work performed by a specific contractor or set of contractors.

- Select the **Contracting Company** dropdown.
- Select one or more contractors from the list.
- The Dashboard updates to show only data attributed to the selected contractors.

Leave the filter set to **All to include data from all contractors.*



Subsystem

Use the **Subsystem** filter to narrow the Dashboard to a specific system and subsystem combination.

- Select the **Subsystem** dropdown.
- Select the system or subsystem you want to view.
- The Dashboard updates to show only data for the selected subsystem.

System

Use the **System** filter to narrow the Dashboard to a specific system and subsystem combination.

- Select the **System** dropdown.
- Select the system you want to view.
- The Dashboard updates to show only data for the selected subsystem.

Asset type

Use the **Asset type** filter to scope the Dashboard to a specific asset type.

- Select the **Asset type** dropdown.
- Select the **Asset type** you want to include.
- The Dashboard updates to show data for those asset types only.

Permanence

Use the **Permanence** filter to scope the Dashboard by whether assets are permanent or temporary.

- Select the **Permanence** dropdown.
- Select the **Permanence** you want to include.

Activity

Use the **Activities** filter to scope the Dashboard to one or more configured activities on your site.

- Select the **Activities** dropdown.
- Select the activity or activities you want to include.
- The Dashboard updates to show data for those activities only.



Summary Status Dials

The Summary Status Dials appear directly below the filter bar. Each box shows an aggregated count of connections in a particular status group, giving you an immediate view of site health. The boxes update in real time as filters are changed.

Users may also select a certain portion of the ring for any dial and be transitioned to an pre-filtered index page of those assets.



Failures

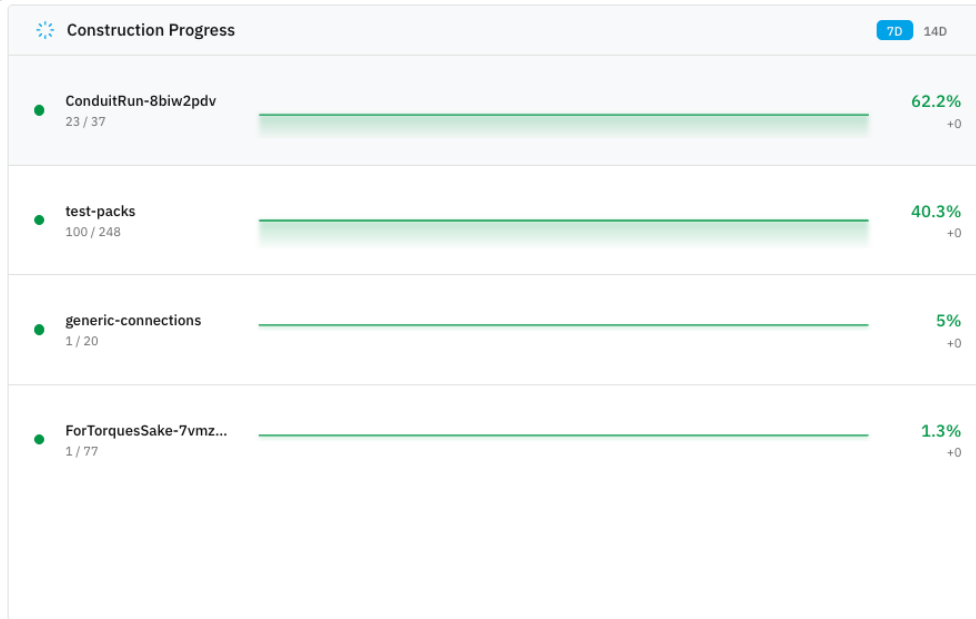
Failures appear below the Summary Status Dials and flag connections that require attention. These may include connections with outstanding tickets.

All charts and status boxes can be printed or exported as a static image. Select the three-bar menu icon in the upper-right corner of any chart to access download options.

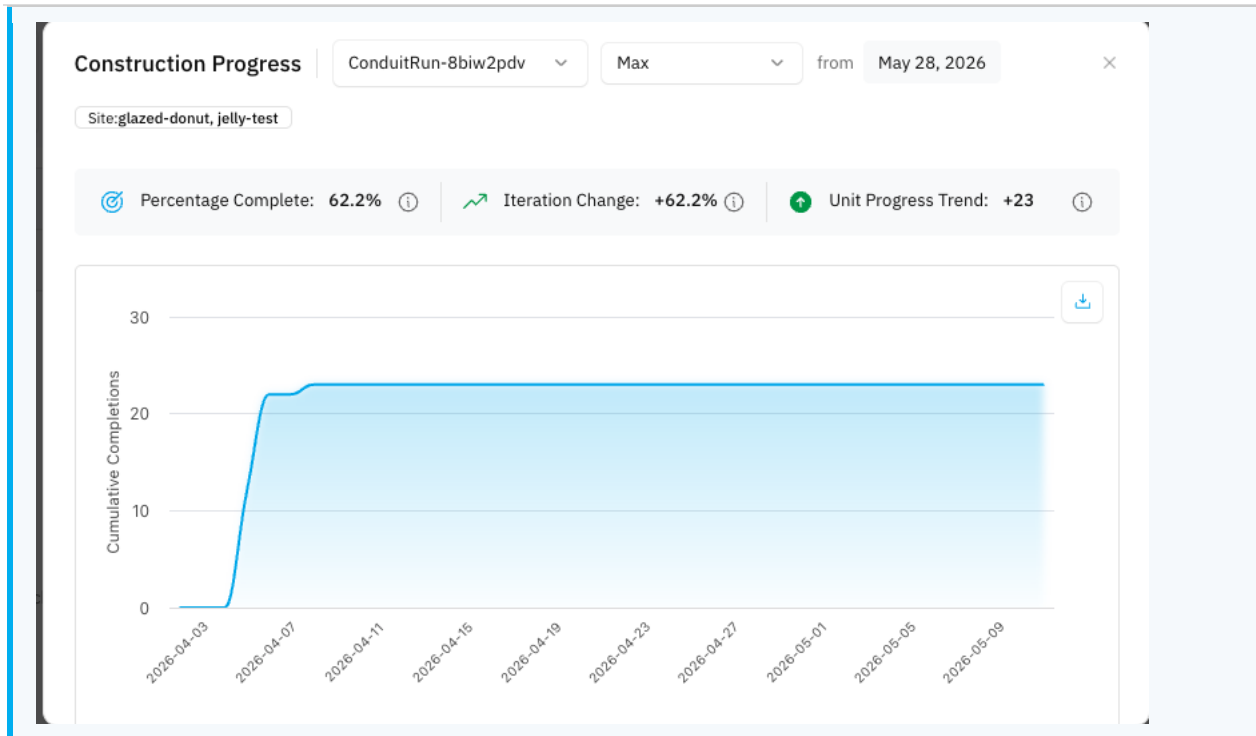
Construction Progress

The **Progress** stacked s-curve shows per asset progress, showing how work is moving forward over time.

- The Stacked S-Curve comes with a quick date filter of 7 and 14 days.



- Clicking into an asset type will open a modal adding further details into that individual widget
- Select date range dropdown to go from Max to a desired date range from the selected date at the top level filter. (Selected date from is surfaced next to the dropdown)
- Progress tracking tiles above the S-curve give users insight into the progress of that particular asset type and the applicable trends
- For options to download, and print this S-curve utilize the download icon at the top right of the s-curve



Issues

The Issues widget gives a comprehensive snapshot (based on top-level filters) of all issues (tickets) within the site. This helps our Quality teams get insight into what is happening at the site level and acts as a quick navigation for them to disposition any issues from the field.

- By default the widget shows all issues (tickets) associated with the site. Use the dropdown to filter to a particular asset type.



Issues All Ticket Types All 1D 7D 30D 90D

Identified (35) Rejected (29)

- Edit Request for Test** about 1 month ago
Test has pending changes awaiting field verification
2026-04-28 9:50AM • glazed-donut • TEST
- Overtorque detected on 04-BOLT-1X4-001** about 1 month ago
Torque value exceeded specification during torquing operation
2026-04-16 2:10PM • glazed-donut
- Edit Request for CMA-V603-XP10-001-test-2** about 2 months ago
CMA-V603-XP10-001-test-2 has pending changes awaiting field verification
2026-04-01 9:31AM • glazed-donut
- Edit Request for CMA-PR2345-ANDROID-002** 3 months ago
CMA-PR2345-ANDROID-002 has pending changes awaiting field verification
2026-03-05 9:58AM • glazed-donut
- Edit Request for 5569-605-P-561-U** 3 months ago
5569-605-P-561-U has pending changes awaiting field verification
2026-03-04 9:34PM • glazed-donut

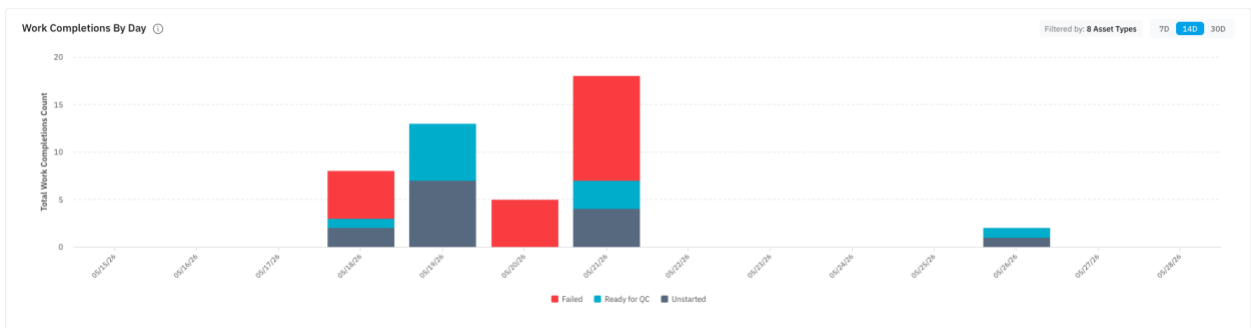
Users can also click on any of the Issues within the widget and be taken directly to that Ticket for disposition within the Tickets tab.

**For more information about ticket approve/reject please see the Tickets user guide*

Work Completions by Day

The Work completions by day bar chart displays all work completed over the selected period. The detailed data is available to be downloaded in the All Operations report.

- The chart respects the top-level filters, but also has an available date range picker in the top right
- Hovering over a certain bar in the graph will show users the break down of that bar with an expanded pop out view.

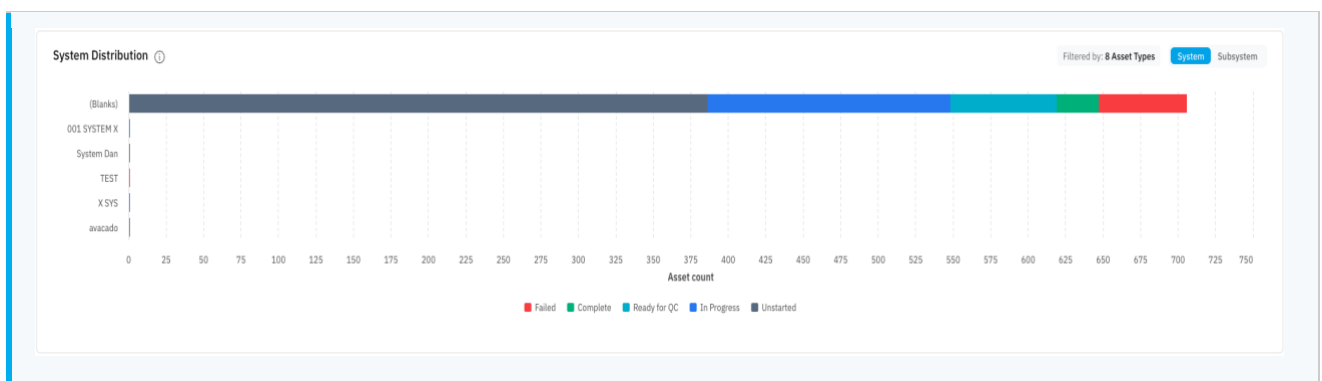




System and Subsystem Distribution

The System/**Subsystem Distribution** bar chart shows the status of connections grouped by system or subsystem for the criteria currently applied in the top level filter bar. Each bar represents a system or subsystem, and the colours within each bar represent different connection statuses.

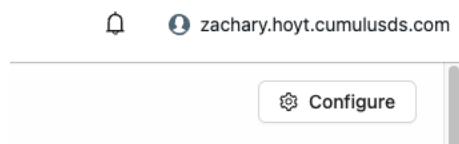
- Select a tab to switch between system or subsystem in the chart.
- Hovering over a certain bar in the graph will show users the break down of that bar with an expanded pop out view.



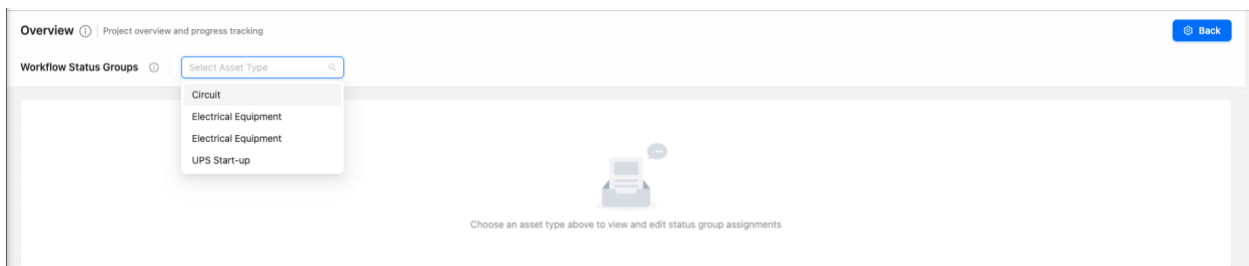
Configuring your dashboard

Within the Control Center Dashboard, we allow users to configure Asset Types statuses to the correct reporting Status Group.

First travel to the Configure page, by selecting the “Configure” icon at the top right of the screen



Next you will need to select the asset type you are going to configure from the “select asset type” dropdown.





Once you have an Asset Type selected, you will first see all statuses configured for that Asset type and what Status Group they are currently reporting against on the dashboard.

Users can select from the dropdown under Status Group column next to the corresponding status to affect how and where that status reports to throughout the dashboard.

Status Name	Status Type	Status Group
Untouched	Success	Unstarted
Cable Pulled	Success	In Progress
Cable Tested	Success	In Progress
ConduitApproved	Success	In Progress
Raceway Installed	Success	Ready for QC
WorkflowComplete	Success	Complete
CablePullingFailed	Failed	Failed
ConduitInstallationFailed	Failed	Failed
ConduitRejected	Failed	Failed
FinalQCFailed	Failed	Failed
Invalid	Failed	Failed
MegTestFailed	Failed	Failed

**Note changing the status group for an asset types status will affect that view for all Control Center users*

When done, select the back button in the top right to save the desired configuration and update the dashboard accordingly. The dashboard will take up to a couple of minutes to refresh depending on the amount of data you have.

SUPPORT

If you have questions about the Dashboard or encounter any issues, contact Cumulus Quality support.

Email: support@cumulusquality.com

For information on other Control Center tabs, refer to the relevant section of the Cumulus Control Center Guide.